

# Kealia Makai

## Lot 22

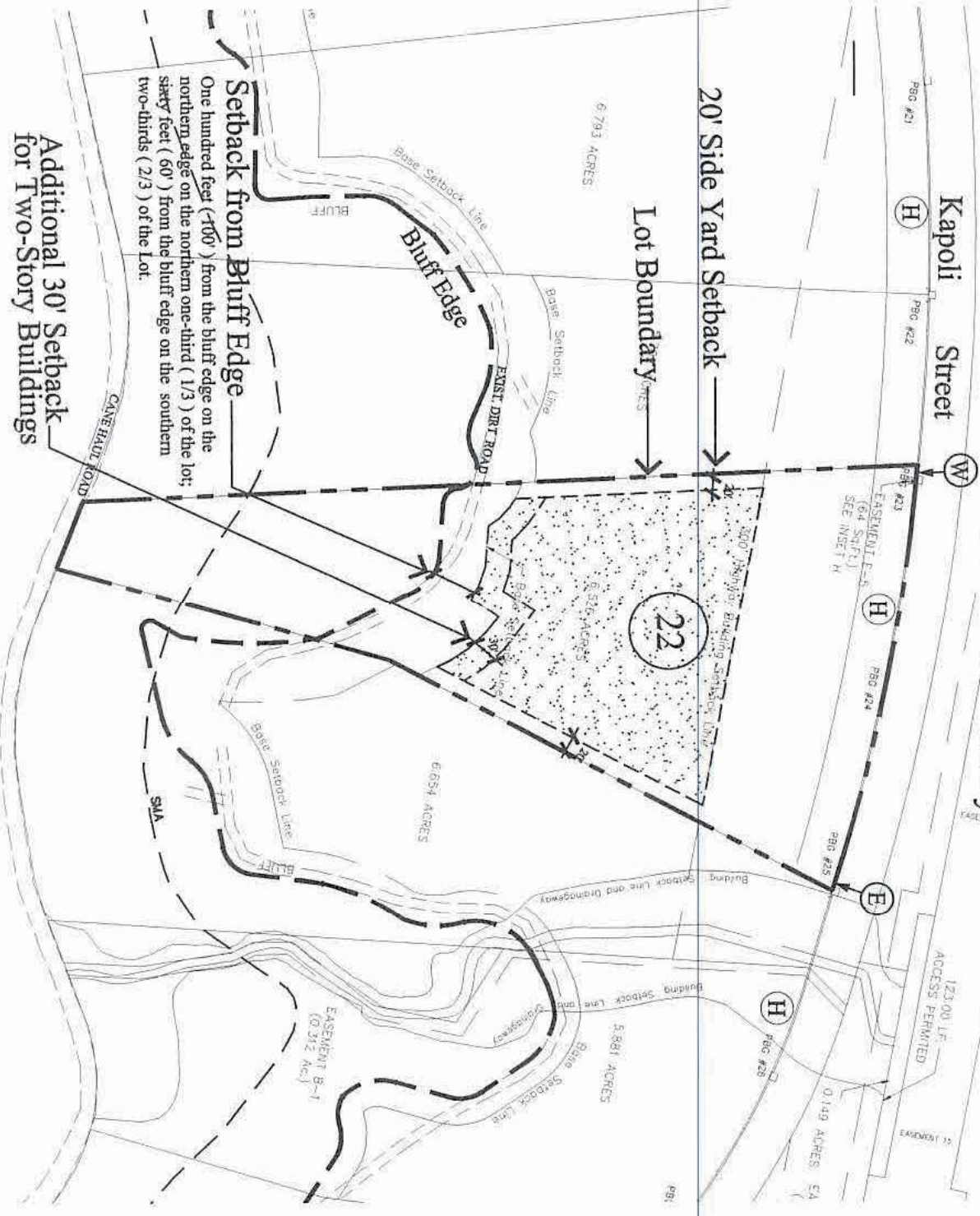
**AREA: 6.526 ACRES**

Buildable Area: +97,425 sq. ft.

Bluff Edge Frontage: 294.42 lineal feet







Makai Boundary: 86.35 lineal feet

This Drawing is for general orientation purposes only to illustrate the Lot and its relationship to easements, roadways and other improvements. There is no representation or warranty of accuracy. The drawing is not to be relied upon in preparing any plans or drawings for any improvements on the Lot. The final location of certain improvements, such as utility laterals, and fire hydrants, may change depending upon actual field conditions encountered during construction, or if engineering practice requires, or the utility companies or governmental agencies request a change. All information on the drawing must be certified by an on-ground field survey prepared by a Land Surveyer.



**Additional 30' Setback for Two-Story Buildings**

**Legend**

-  Buildable Area
-  Street Light
-  Fire Hydrant
-  Electrical, Telephone & Cable Television Laterals
-  Potable Water Service Laterals
-  Irrigation Water Service Laterals (Locations to be Determined)

NORTH

LINEAL SCALE (FEET)

